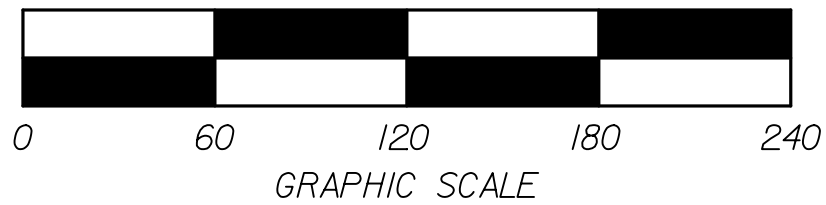


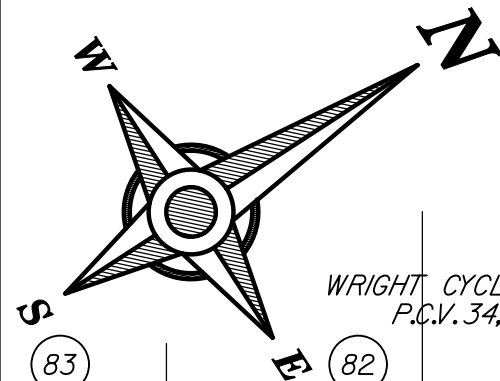
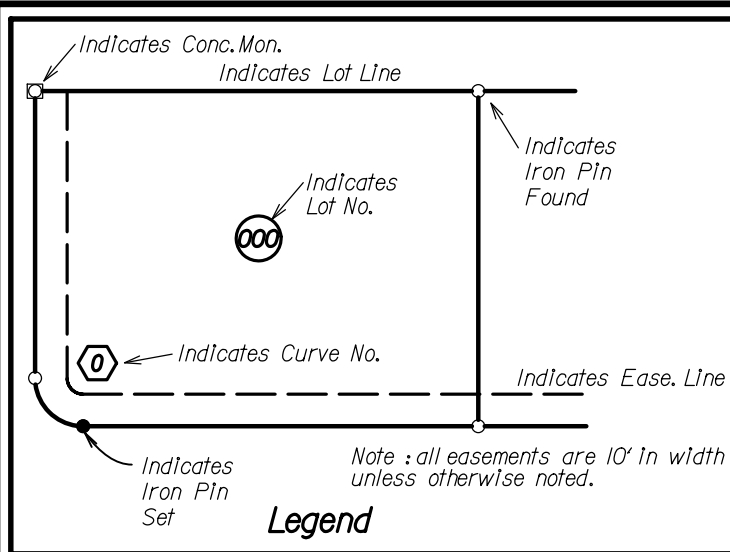
RECORD PLAN WRIGHT CYCLE ESTATES SECTION TEN

A PLANNED UNIT DEVELOPMENT
CONTAINING 7.535 ACRES
LOCATED IN MILITARY SURVEY NO. 2264
CITY OF XENIA - GREENE COUNTY, OHIO
23 LOTS

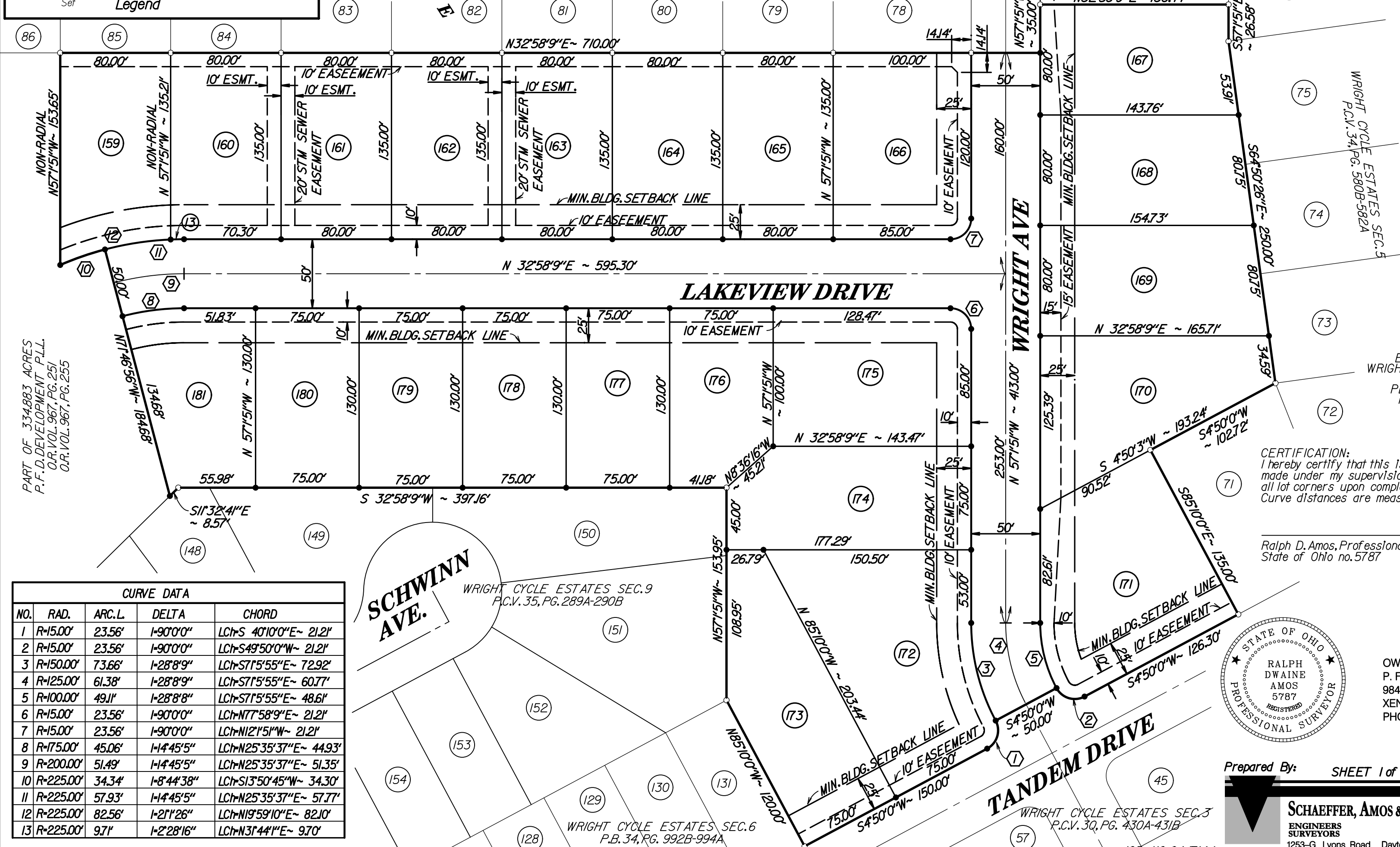
Scale : 1" = 60'



LOT AREAS	
NO.	AREA IN SF.
159	11348
160	10801
161	10800
162	10800
163	10800
164	10800
165	10800
166	13452
167	11111
168	11940
169	12818
170	13523
171	16566
172	18403
173	13588
174	12790
175	14299
176	9243
177	9750
178	9750
179	9750
180	9750
181	10437
R/W	54905
TOTAL	328222



WRIGHT CYCLE ESTATES SEC.5
P.C.V. 34, PG. 580B-582A

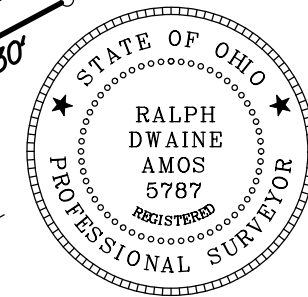


PART OF 334.883 ACRES
P.F.D. DEVELOPMENT P.L.L.
O.R. VOL. 967, PG. 251
O.R. VOL. 967, PG. 255

BEARING BASIS:
WRIGHT CYCLE ESTATES
SECTION ONE
PLAT CAB. VOL. 30
PGS. 319A-320B

CERTIFICATION:
I hereby certify that this is a true and complete survey made under my supervision. Iron pins will be set at all lot corners upon completion of construction. Curve distances are measured on the arc.

Ralph D. Amos, Professional Surveyor
State of Ohio no. 5787



OWNER & DEVELOPER:
P. F. D. DEVELOPMENT P.L.L.
984 ORVILLE WAY
XENIA, OHIO 45385
PHONE : (937) 376-9113

CURVE DATA				
NO.	RAD.	ARC.L.	DELTA	CHORD
1	R=15.00'	23.56'	1-90°0'0"	LC1+S 40°10'0"E ~ 21.21'
2	R=15.00'	23.56'	1-90°0'0"	LC1+S 49°50'0"W ~ 21.21'
3	R=150.00'	73.66'	1-28°8'9"	LC1+S 71°5'55"E ~ 72.92'
4	R=125.00'	61.38'	1-28°8'9"	LC1+S 71°5'55"E ~ 60.77'
5	R=100.00'	49.11'	1-28°8'8"	LC1+S 71°5'55"E ~ 48.61'
6	R=15.00'	23.56'	1-90°0'0"	LC1+N 7°58'9"E ~ 21.21'
7	R=15.00'	23.56'	1-90°0'0"	LC1+N 12°1'51"W ~ 21.21'
8	R=175.00'	45.06'	1-14°45'5"	LC1+N 25°35'37"E ~ 44.93'
9	R=200.00'	51.49'	1-14°45'5"	LC1+N 25°35'37"E ~ 51.35'
10	R=225.00'	57.93'	1-14°45'5"	LC1+N 25°35'37"E ~ 57.77'
11	R=225.00'	57.93'	1-21°1'26"	LC1+N 19°59'10"E ~ 82.10'
12	R=225.00'	82.56'	1-21°1'26"	LC1+N 31°44'1"E ~ 9.70'
13	R=225.00'	9.71'	1-2°28'16"	LC1+N 31°44'1"E ~ 9.70'